

C O R P O R A T E G U I D E

Creating New Value : Key to Unceasing Development



JFE Shoji Electronics Corporation

Greeting from the president

We want to be an attractive
and challenging group that continues
to advance forward with society.

JFE Shoji Electronics Corporation
President and Representative Director
Takaaki Yanagisawa



Rapidly advancing electronics technology is largely changing the way we live and interact with people, and how we work. They are revolutionizing human society through economic globalization and the diversification of people's values and behavior patterns. As the only electronics trading company in the JFE Group, we are committed to creating new value and providing optimal services by constantly absorbing and applying cutting-edge technologies with being aware of the trend based on our many years of experience in the industry.

In the Semiconductor device, Foundry, SMT & Packaging process, Cleaning process, Smart factory, and high-performance materials businesses, we will continue to provide distinctive products and highly differentiated services & solutions while using our strength, our extensive global network of overseas bases. At the same time, we will position sustainability as the foundation of our corporate existence and strive to maximize our corporate value.

We also aim to assist our customers in the "DX of manufacturing" by meeting the needs of all the manufacturing industries that surround us while applying our experience accumulated through the use of data and the latest digital technology to the manufacturing site.

What we value the most is to be "a company that thoroughly pursues CONTRIBUTION to customers, suppliers, the market, and society," in other words, CONTRIBUTION to all stakeholders.

In order to achieve this, we will share the true issues with our customers by showing our APPRECIATION, and then we will boldly take on the CHALLENGES speedily without fear of failure.

Then, we aim to provide innovative solutions with our unique DIFFERENTIATION.

We will share this awareness within the company as the keyword "ACCD," and we will continue to promote uncompromising discussions and sincerely address issues to be a company that continues to be trusted as a true partner.

We want to be an attractive and challenging group that continues to advance forward with society. That is our desire.

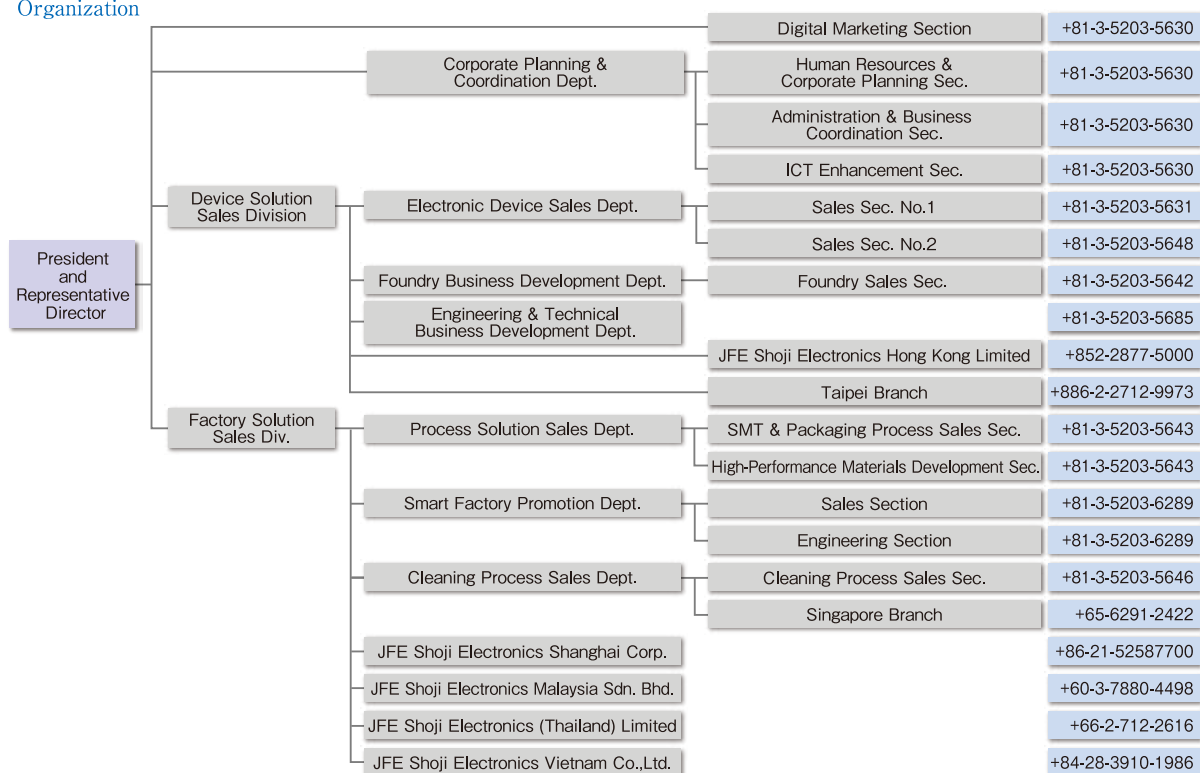


JFE Shoji Electronics Corporation

Corporate Profile

Company name	JFE Shoji Electronics Corporation
Established	October, 2004
Head office	Shin-Otemachi Bldg. 2-1, Otemachi 2-chome, Chiyoda-ku, Tokyo 100-0004, Japan Tel : 81-3-5203-5630 Fax : 81-3-5203-5625
Domestic offices	Tokyo and Osaka (Tel : 81-6-4795-7061 FAX : 81-6-4795-7442)
Overseas offices	Subsidiaries : Hong Kong, Malaysia (Kuala Lumpur, Penang), Thailand (Bangkok), China (Shanghai, Dalian, Chengdu, Shenzhen), Vietnam (Ho Chi Minh, Hanoi) Branch office : Taiwan (Taipei), Singapore
Paid-up Capital	1 billion yen
Shareholder	Wholly owned by JFE Shoji Corporation
Directors	President and Representative Director : Takaaki Yanagisawa Managing Director : Kunihide Ebina Director : Masakatsu Sawada Director : Tatsuya Hoshihara Director (Part-time) : Yukimori Nakamura Audit & Supervisory Board Member (Part-time) : Kouichi Kato
No. of employees	95 (non-consolidated), 181 (consolidated) (As of April 1, 2022)

Organization



Fiscal Period From April to March 31

Business Description

- Providing the total solutions from design and development to production service of various semiconductor products, sales and product planning of peripheral equipment and measuring instruments, etc.
- Sales, installation, maintenance and aftersales service of Surface Mounting System including device assembling and inspection equipment together with peripheral equipment and related software.
- Sales and aftersales support of industrial cleaning equipment and various cleaning solvents
- Providing the products and solutions that contribute to smart factory and automation

Bank

Mizuho Bank, Ltd.

ISO

ISO14001, ISO9001 (Head office and Osaka)

URL

<https://www.jfe-shoji-ele.co.jp/>



Domestic and Overseas Offices

Domestic Offices

Head office Address : Shin-Otemachi Building, 2-1 Otemachi 2-chome, Chiyoda-ku, Tokyo 100-0004
Tel : +81-3-5203-5630 Fax : +81-3-5203-5625

Osaka office Address : 17th Floor, Dojima Avanza, 6-20 Dojima 1-chome, Kita-ku, Osaka 530-8318
Tel : +81-6-4795-7061 Fax : +81-6-4795-7442

Overseas Offices

China JFE Shoji Electronics Shanghai Corporation
Address : Block B, 8th Floor, Longfeng Building, No.1566 West Yan'an Road, Changning District, Shanghai
Tel : +86-21-52587700 FAX : +86-21-52588850
Dalian Branch
Address : 405, Jin Feng Building, No.130 Jin Ma Road, Development Area, Dalian City
Tel : +86-411-87327271 +86-411-87327274 Fax : +86-411-87327276
Chengdu Branch
Address : Room 1206, Unit 2, 2nd Building, ShangdingGuoji, No.27, 4th Block, South Renmin Road,
Chengdu, Sichuan, China
Tel : +86-28-85576993 Fax : +86-28-85576993

Hong Kong JFE Shoji Electronics Hong Kong Limited
Address : Unit 1115, 11/F, The Metropolis Tower, 10 Metropolis Drive, Hung Hom, Kowloon, Hong Kong
Tel : +852-2877-5000 Fax : +852-2529-9319

Thailand JFE Shoji Electronics (Thailand) Limited
Address : 42 Tower Building, Room No G01, G Floor, 65 Soi Sukhumvit 42, Sukhumvit Road,
Phra Khanong Sub-District, Khlong Toei District, Bangkok 10110 Thailand
Tel : +66-2-712-2616 Fax : +66-2-712-2613

Malaysia JFE Shoji Electronics Malaysia Sdn. Bhd.
Address : Wisma AmFIRST, Suite 801-1, Level 8, Tower 2, Kelana Brem Towers,
Jalan SS 7/15 (Jalan Stadium), 47301 Kelana Jaya, Petaling Jaya, Selangor Darul Ehsan, Malaysia
Tel : +60-3-7880-4498 Fax : +60-3-7803-4478
Penang Branch
Address : 11A, Jalan Todak 6, Sunway Perdana Pusat Komersial, 13700 Seberang Jaya, Pulau Pinang,
Malaysia
Tel : +604-383-1468 Fax : +604-386-6675

Vietnam JFE Shoji Electronics Vietnam Co.,Ltd.
Address : Room 3B, 4th Floor, Tai Vuong Building, 104 Ung Van Khiem Street, Ward 25,
Binh Thanh Dist, Ho Chi Minh City, Vietnam
Tel : +84-28-3910-1986 Fax : +84-28-3910-1987
Hanoi Satellite Desk
Address : Unit 512A, 5th floor, Sun Red River building, 23 Phau Chu Trinh Street, Hoan Kiem District,
Hanoi, Vietnam
Tel : +84-24-3974-3225/6 Fax : +84-24-3974-3229

Taiwan JFE Shoji Electronics Corporation Taipei Branch
Address : Room A-1, 3th Floor, Hungtai World Building, No.170, Dunhua North Road, Taipei City 10548
Tel : +886-2-2712-9973 Fax : +886-2-2712-9881 +886-2-2546-3886

Singapore JFE Shoji Electronics Corporation Singapore Branch
10 Anson Road # 19-16 International Plaza, Singapore 079903
Tel : +65-6291-2422 Fax : +65-6291-2522



Electronic Device Business

With the advancement of IT and digital technologies, there is an increasingly diverse array of automotive and electronic devices, along with consumer electronics, OA, mobile, and high-speed networks.

We take advantage of our global network to stock countless distinctive electronic devices made in Japan and abroad.

Additionally, we provide reliable product development to mass production services, along with increasingly diverse technical support to meet our customers' needs.

■ Examples of Manufactured Products

Mega Chips

MegaChips

MegaChips provides a variety of solutions by making full use of a wide range of knowledge, which leads to manufacturing quality assurance directly onward from the time of development. With the integration of management with Kawasaki Microelectronics in April 2013, they became a top 10 world-class, Fabless Manufacturing ASIC/ASSP company.



Swissbit

swissbit®

Swissbit is a manufacturer that produces and sells NAND flash-related products (SSD, CF, etc.) for the industrial market, emphasizing the importance of reliability, durability, and performance. We provide a total memory solution which focuses on the ability to provide long-time supply, customizability and advancement in performance while adapting to the life-cycle of industrial equipment.



Semtech



Semtech Corporation provides semiconductor devices for use in video/imaging products, data communication equipment(DCE), etc., particularly, CDRs, TIAs and Laser drivers for optical communication equipment as well as SDI-interface ICs for broadcasting equipment.



Genesys Logic



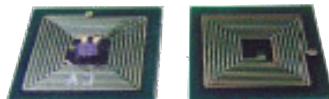
Genesys Logic Inc. is a leading manufacturer of Taiwan, which excels in the field of high-speed I/O technology. In particular, they have a flawless product schedule for the technological development of USB2.0, USB3.1, SD3.0 and SATA3.0. They have a record of supplying products to numerous major electronics companies in countries all over the world, including Japan.



Yoshikawa RF Semicon



Yoshikawa RF Semicon develops a specialized of RFID chips and the related products like readers and writers. They have a high-degree of knowledge and technical capabilities along with a variety of expertise as well as a wide range of patents.



Electronic Device Business

Major Products

DDC



DDC is the leading manufacturer of MIL-STD-1553B-compliant data bus products certified under MIL-PRF-38534/5, and has been adopted by many companies in the U.S. and Japanese defense industry, including RD converters and SSPCs. In recent years, they have started to handle SBCs and memories for space, and have a wide range of products that can be used in space development fields such as transportation vehicles, satellites, and gateways, where further market expansion is expected..



avalue Technology



avalue is a Taiwanese manufacturer that develops and manufactures IPC and CPU boards. They provide reliable and high quality industrial embedded computers, COM (Computer On Module), monitors for medical purposes, and PoS/KIOSK terminals.



LOTES



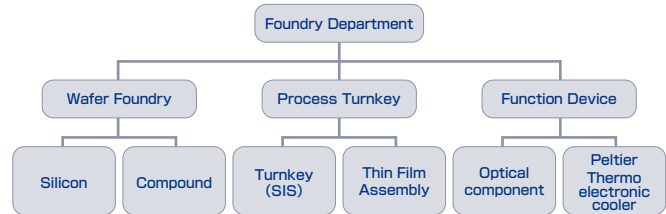
LOTES offers high-quality connectors, cables and harness products for primary interface specifications such as PCIe/SATA/USB/HDMI/RJ45 and CPU sockets. The company is quick to adapt to the newest specifications (such as USB Type-C) and has already arranged an abundant product line-up. By providing a production line from mold making to connector manufacturing, we can respond flexibly to customization requirements from customers.



Foundry Business Development

JFE Shoji Electronics Corporation is recognized as the first official Channel Partner of the world class foundry, GLOBALFOUNDRIES Inc in Japan. We have been supporting not only sales & logistics but also production development, and have contributed more than 400 production tape outs through our technical consultation. Our experienced and professional technical staffs coming from wafer foundry supplier surely help the successful product development at any stage and anytime.

We can also offer flexible and valuable Turnkey service, SIS (Silicon Integration Service) which is really useful for customers if full or partial production service (wafer manufacturing, assembling and testing) including product design service like ASIC is required. Furthermore, isolators and lenses for optical component in the high speed optical network market are also our strategic products. Peltier type of thermoelectric cooler (TEC) is listed in our product lineups, too.



Major Products

Wafer Foundry



GLOBALFOUNDRIES (GF) is a top class foundry whose 6 fabs are located in US, Germany and Singapore. GF lines up not only mainstream logic process but also FDSOI (FDX™) which realizes super low power consumption, RF process which covers up to mmwave and HV process which adapts wide operating voltage range. GF's strong ecosystem partners (GLOBALSOLUTIONS®) enable the fast time-to-market of your LSI which will be applied to various applications such as 5G, IoT, automotive, power management, driver and industrial.

Node	FinFET	FDSOI (FDX™)	RFSOI	SiGe	RFCMOS	Bulk CMOS	High Voltage	Silicon Photonics
12nm	●							
22nm		●						
28nm					●	●		
40nm					●	●		
45nm			●					●
55nm					●	●	●	
65nm					●	●		
90nm				●				●
130nm			●	●		●	●	
180nm			●	●	●	●	●	
350nm				●				

● : GLOBALFOUNDRIES ● : TSI Semiconductors



TSI Semiconductors (TSI) is a foundry whose fab is located in California. TSI has high voltage process technology which adapts 12V to 700V, and RF process technology. These technologies were transferred from IBM and its high precision model enables first-time-right of your LSI design.

Silicon Integration Service



Silicon Integration Service, called SIS is our innovative turkey solution. Known as our unique service, our goal is to deliver final products to customers what meet their demand in addition to our foundry service. SIS can support any process of manufacturing until final product's completion including wafer probe testing, bumping, assembly, final goods testing which are following wafer manufacturing. It is also realized by close cooperation with our manufacturing partner at whole steps.

Device



We propose highly precise and high performance optical components and devices for data center or 5G/6G base station. Our product range is diversified; optical isolator, optical lens, photo diode, laser diode and so on. Furthermore, we offer Peltier device (thermoelectric cooler) which is used for diversified applications such as satellite, semiconductor production equipment, luxury car seat, wine cellar, cooler box etc. Primary benefits are the best price, performance and sustainable supply chain according to the customer's request.



Solutions Business

In order to meet the demands of a diversified market, we believe that “proposals of added value the delivery of total solutions.”

We respond to our customer’s requests by organizing our world class company according to QCDS, including ODM/OEM/EMS, in the fields of the image board businesses, communication infrastructure of Wi-Fi,LTE and 5G and contracted development businesses of finished products.

This includes Wi-Fi,LTE and 5G communication infrastructure businesses and finished product contracted development businesses(including ODM/OEM/Firmware development), which also includes communication infrastructure.

In addition, we provide total solution service regarding AI sprinkling and fertilization robot “ZeRo.agri” including of supplying and selling instrument in the field of ICT for farmer, agribusiness firm and agricultural school.

Examples of Manufactured Products

- Image Board Business (Including software development)
- Wi-Fi · Bluetooth communication board business (Including ODM / OEM / firmware development)
- SoC Business (Including firmware development for various OS Android/Linux/Windows, etc.)
- Touch Panel Module (electrostatic system)
- RF-ID Business (custom support available)
- Various circuit board development/ software and firmware development



MERRY is a manufacturer and supplier to major brands of OEM/ODM speakers and headphones. They offer high-quality products with superior sound-tuning technology that meets each customer’s needs.



Gemtek is a leading Taiwanese OEM/ODM manufacturer of communication module and equipment and modules such as WiFi/WiMAX/LTE.



Routrek Networks is a maker of AI sprinkling and fertilization robot “ZeRo.agri” and expanding related service. With the slogan “Holiday for agriculture,” we will provide solutions to achieve high quality while achieving labor saving, water saving, and fertilizer reduction by IoT technology.



LUXNET is a manufacturer engaged in design and manufacturing from optical components up to optical modules (ODM). They offer high-quality products through quality controlled in-house production.



Mounting Equipment Business (SMT)

To accommodate high performance, small, lightweight electrical and electronic products, we have implemented the superior mounting equipment of Panasonic Connect Co., Ltd. From technical support to maintenance, as well as peripheral equipment, we offer total solutions with advanced technology and a wide range of products to solve the issues customers face as they expand globally.

Products

Main Products



Panasonic Connect Co., Ltd.
Screen Printer, Production Modular, Die Bonder, Flip Chip Bonder, Plasma Cleaner



Koh Young Technology, Inc.
3D Automated Optical Inspection
3D Solder Paste Inspection



PSP Asia Co., Ltd.
Smart Reel Rack

Other Products · Manufacturers

- || **Ultrasonic Cutting System:** Takada Corporation

- || **Visual Inspection Support System:** Hitachi Giken Co., Ltd.

- || **Variant Component Insertion Machines, Semi-Automatic Component Insertion Machines, Moisture-Proof Coating Machines:** Alpha Design Co., Ltd.

- || **Dispenser:** Suzuki Co., Ltd.

- || **Loader, Conveyor:** Nagaoka Seisakusho Co., Ltd., YS Co., Ltd., Komatsu Electronics Co., Ltd., Nutek Pte Ltd., Eunil Co., Ltd.

- || **Reflow:** Tamura Corporation Co., Ltd., Antom Co., Ltd., Senju Material Industry Co., Ltd.

- || **Stencils, Stencil Cleaner:** Process Lab Micron Co., Ltd.
Sawa Corporation Co., Ltd., Nakamura Choukou Co., Ltd.

- || **Rework Station:** Den-on Instruments Co., Ltd., M.S. Engineering Co., Ltd.

- || **Nozzle Cleaner:** Nakamura Choukou Co., Ltd.

- || **Automatic Soldering Robot:** Meiko Electronics Co., Ltd.

- || **Laser Marker, Laser Cutter:** HG TECH

Cleaning Equipment

For more than two decades, we have been selling various types of industrial-use cleaning equipment featuring environmentally friendly hydrocarbons and water-based solvents, and also offering maintenance and repairs for these products, not only in Japan but also throughout China and Southeast Asia. In addition, as an advisor specializing in the industrial parts cleaning process, we make full use of our experience to provide products and solutions, plus top-notch suggestions on optimal environment-friendly and cost-effective solutions as well as after-sales services by well-experienced staff.

Major Products

[Hydrocarbon cleaning system]

Features: High degreasing and cleaning capability against press and cutting machine oils. Its solvent distillation/recycling capability contributes to the reduction of running costs.

Applications: Degreasing and cleaning of pressed metal parts; flux cleaning on print circuit boards

[Water based cleaning system]

Features: Safe and secure systems suitable for degreasing and cleaning of water-soluble oils as well as for elimination of contaminants

Applications: Degreasing and cleaning of pressed metal parts; elimination of contaminants

[Cleaning solvents]

We can provide different types of solvents most appropriate for respective application in each country:

ExxonMobil Chemical's Actrel hydrocarbon cleaners (Japan and other Asian countries)

Musashi Techno Chemical's cleaning solvents (China, Japan)

Original brand [J CLEAN series] (Asia countries)



Measurement Equipment Business

We handle manufacturing industry research and development, production technologies, quality assurance, quality control, needs within the field of maintenance, and unique measurement and analysis instruments using advanced technology domestically and abroad. We provide solutions with added expertise through a combination of the sales of equipment (functioning as a trading company) and maintenance services (functioning as a manufacturer).

Measurement and Analysis Equipment

[Particle Counter]

- HIAC liquid-borne particle counters
- Pentagon surface particle detector QIII

[Wafer/Reticle shaped wireless communication sensor]

- CyberOptics particle, vibration, leveling, a gap, teaching, humidity sensor

[Non-contact infrared thermometer]

- Fluke Process Instruments Spot Pyrometers, Handheld Pyrometers, LineScanners, Infrared Imaging System, Thermal Imager

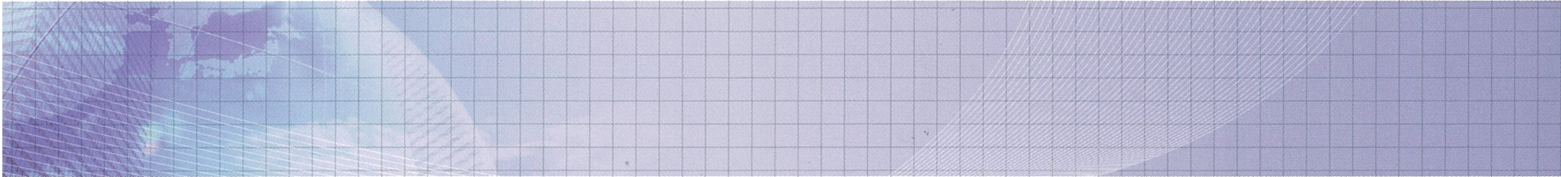
[Oil condition sensor]

- Temperature, humidity, permittivity conductivity, viscosity, ferromagnetic abrasion powder

[Various analytical instruments, equipment]

- Non-contact thickness distribution measuring instrument
- X-ray fluorescence spectrometers
- Micro-nanofluidic laboratory equipment
- Viscosity meter
- Volatile organic compounds instruments
- Microwave digestion device
- Ethylene removal equipment (for the agricultural sector)





JFE Shoji Electronics Corporation

<http://www.jfe-shoji-ele.co.jp/>